

Craftsbury Academy

Water Quality at the Wild Branch River

The students of Craftsbury Academy's 10th grade class went to the Wild Branch River on October 16th, 2008 to evaluate the river and how it could compare to the ideal river in the state of Vermont.

We tested for macroinvertebrate life on the river bottom, as well as the river's chemical evaluation involving tests such as pH levels and conductivity. We were assisted by Kim Komer, the Lamoille River Watershed Coordinator, and a teacher from Johnson State College, as well as some parents of our classmates, and our biology teacher.

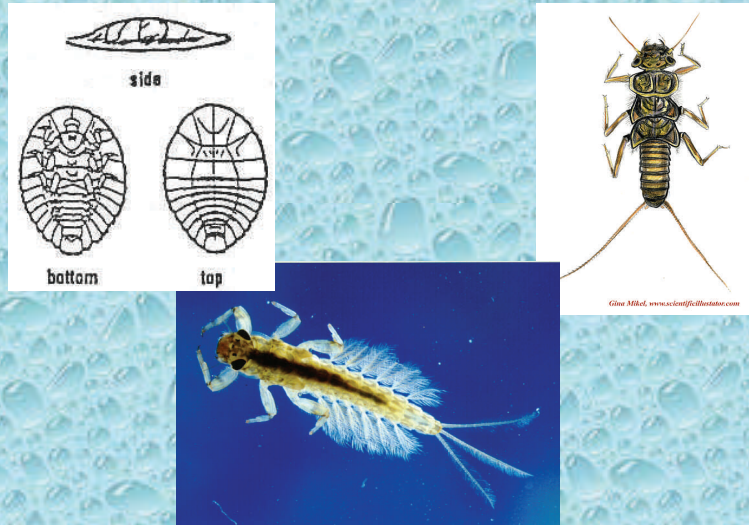
Craftsbury Academy's sophomores plan to travel back to the Wild Branch River in the spring of 2009, to test the water again, and evaluate the river's health changes or consistency.

Picture Sources

<http://www.life.uiuc.edu/ib/109/Insect%20rearing/photos/mayfly%20nymph.jpg>

http://www.scientificillustrator.com/art/insects/stonefly_larva.jpg

<http://www.amrclearinghouse.org/Sub/WATERmonitoring/Macro%20pics/waterpenny.jpg>



These pictures shown above are just some of the macroinvertebrates that we found on the river's bottom. They are, from the left, a mayfly larvae, a water penny viewed from different angles, and a stonefly.

CHEMICAL TEST RESULTS

	<i>Test Number 1</i>
<i>Temperature</i>	11.4 °C in river
<i>DO (Dissolved Oxygen)</i>	13mg/L
<i>Phosphate</i>	.18 mg/L (PO ₄ ³⁻)
<i>Conductivity</i>	92µS
<i>Turbidity</i>	-----
<i>pH</i>	7.25